

ASSEMBLY DRAWING

- Designed for NAND128-A/NAND256-A flash memories
- Applicable for prototyping and using with any accessible programmer

The TSOP48 programming adapter consist of:

- Top board PCB (1 pc.)
- Bottom board PCB (1 pc.)
- PLD connectors (*12x2 pins – 2 pc.)
- PLS connectors (*24x1 pins – 2 pc.)

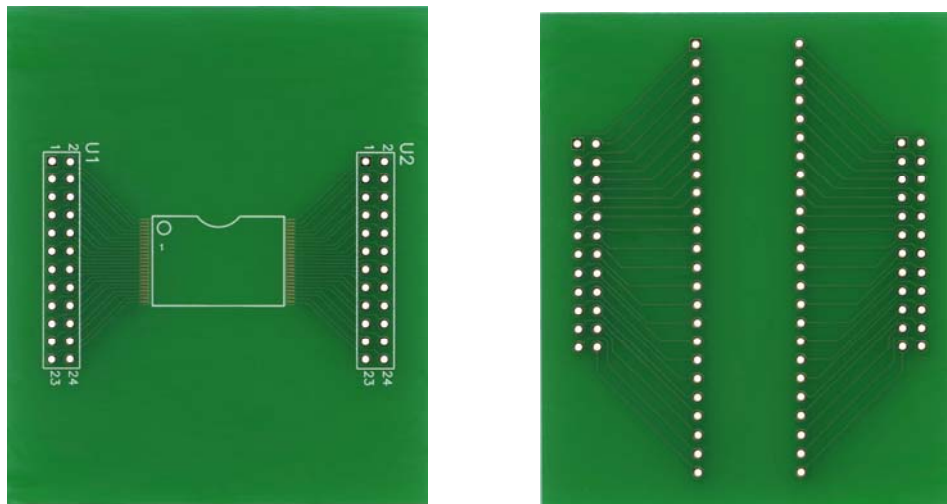


Figure 1 (Top and bottom boards)

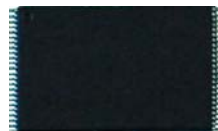


Figure 2 (TSOP48 12 x 20 mm NAND FLASH IC)

4 steps assembling procedure:

- 1) Mount target IC on the top PCB
- 2) Mount PLD x 2 adapters on the top PCB
- 3) Mount PLD x 2 adapters on the bottom PCB
- 4) Mount PLS x 2 adapters on the bottom PCB

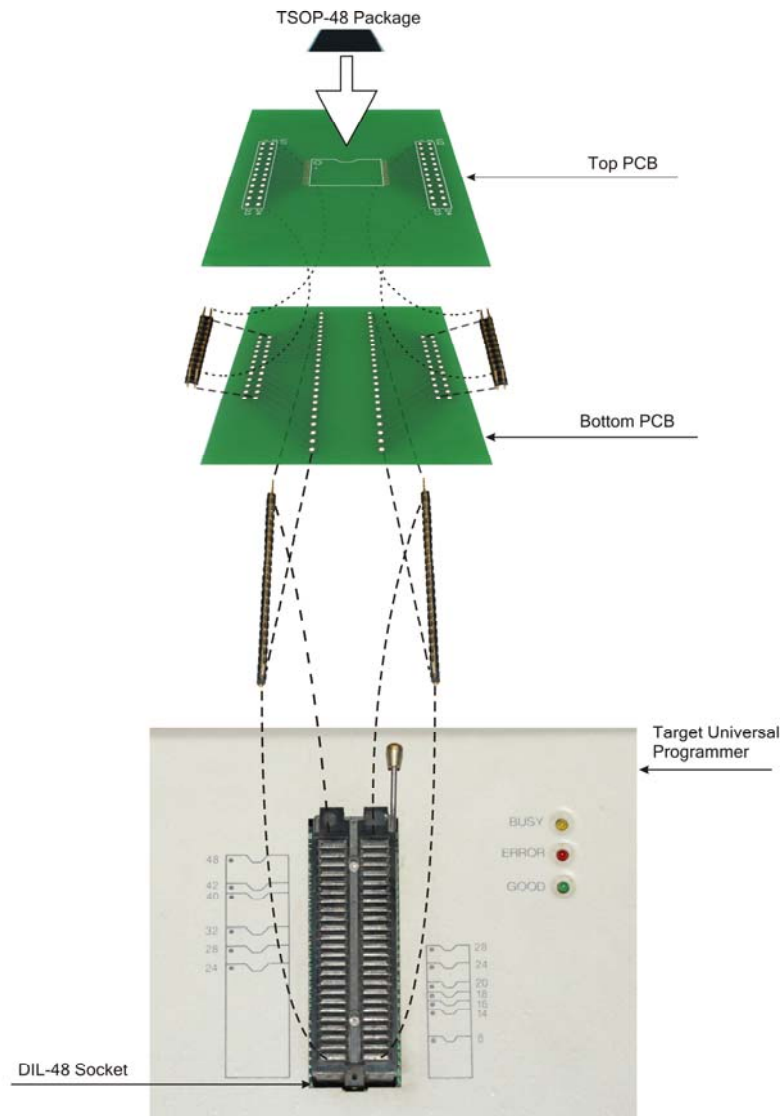


Figure 3 (Assembling drawing of programmer adapter unit)